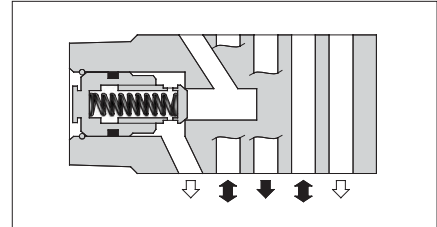


Check Modular Valves

Specifications

| Model Numbers | Max. Operating Pressure MPa (PSI) | Max. Flow L/min (U.S.GPM) |
|--|--------------------------------------|------------------------------|
| MCP-03-*-10 MCA-03-*-20 MCB-03-*-20 MCT-03-*-10 | 25 (3630) | 70 (18.5) |



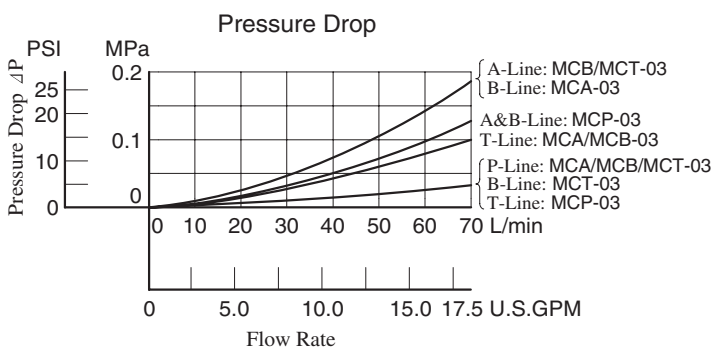
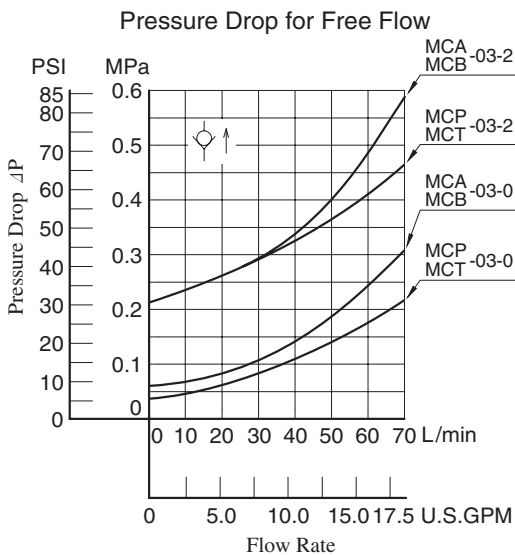
Model Number Designation

| F- | MCP | -03 | -0 | -10 | * |
|---|-----------------------------|------------|-------------------------------|---------------|-----------------|
| Special Seals | Series Number | Valve Size | Cracking Pressure MPa(PSI) | Design Number | Design Standard |
| F: Special Seals for Phosphate Ester Type Fluids (Omit if not required) | MCP: Check Valve for P-Line | 03 | 0: 0.035(5) 2: 0.2(29) | 10 | Refer to ★ |
| | MCA: Check Valve for A-Line | | | 20 | |
| | MCB: Check Valve for B-Line | | | 10 | |
| | MCT: Check Valve for T-Line | | | | |

★ Design Standards: None Japanese Standard "JIS", European Design Standard and N. American Design Standard

Typical Performance Characteristics

Hydraulic Fluid: Viscosity 35 mm²/s (164 SSU), Specific Gravity 0.850



| Model No. | Graphic Symbols | Detailed Graphic Symbols |
|-----------|-----------------|--------------------------|
| MCP-03 | | |
| MCA-03 | | |
| MCB-03 | | |
| MCT-03 | | |

Instructions

● Tank Line Used

Check valve function of MCT-03 is included in TA-Line. Therefore, the tank line for a circuit that uses this valve must be TA-line.

MCP-03-*-10

Approx. Mass.....2.5 kg (5.5 lbs.)

MCA-03-*-20 MCB-03-*-20

Approx. Mass.....3.5 kg (7.7 lbs.)

MCT-03-*-10

(Check valve is included)

Approx. Mass.....2.8 kg (6.2 lbs.)

DIMENSIONS IN MILLIMETRES (INCHES)

■ Spare Parts List

MCP-03-*-10

● List of Seals

| Item | Name of Parts | Part Numbers | Qty. | Remarks |
|------|---------------|--------------|------|---|
| 8 | O-Ring | SO-NB-A014 | 5 | Included in Seal Kit Kit No.: KS-MCP-03-10 |
| 9 | O-Ring | SO-NB-P21 | 1 | |

MCT-03-*-10

● List of Seals

| Item | Name of Parts | Part Numbers | Qty. | Remarks |
|------|---------------|--------------|------|---|
| 7 | O-Ring | SO-NB-A014 | 5 | Included in Seal Kit Kit No.: KS-MCP-03-10 |
| 8 | O-Ring | SO-NB-P21 | 1 | |

MCA-03-*-20

● List of Seals

| Item | Name of Parts | Part Numbers | Qty. | Remarks |
|------|---------------|--------------|------|---|
| 6 | O-Ring | SO-NB-A014 | 5 | Included in Seal Kit Kit No.: KS-MCA-03-20 |
| 7 | O-Ring | SO-NB-P24 | 2 | |

MCB-03-*-20